



# Vivekanand Education Society's Institute of Technology

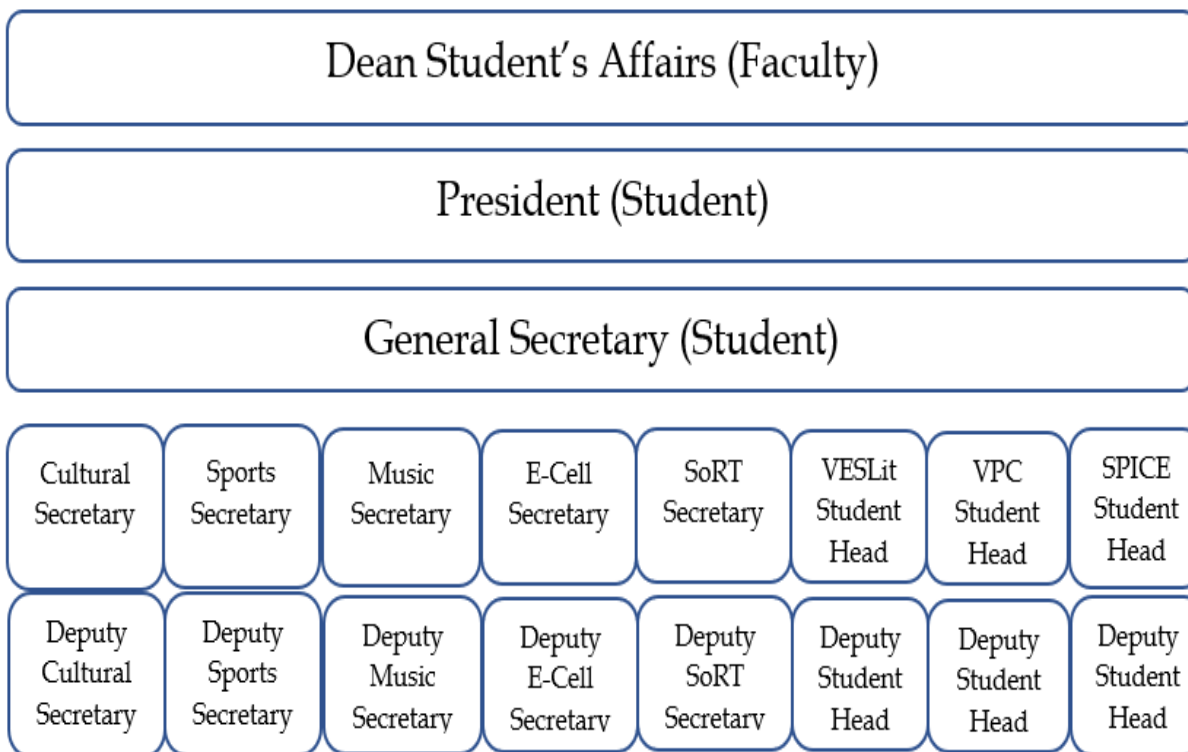
(Affiliated to University of Mumbai, Approved by AICTE & Recognized by Govt. of Maharashtra)

## Students' representation and engagement in various administrative, co-curricular and extracurricular activities

The Institute has an active Students Council and committees which promotes participation of students in academic and administrative bodies to conduct co-curricular and extracurricular activities.

### 1. Active Student Council

The institution has a students' council which is a statutory body constituted as per Maharashtra University Act, 1994. It aims to give students an enriching opportunity to develop leadership by organizing and carrying out school activities and service projects. The general constitution of the students' council is as follows:



### 2. Students representation in academic committees for conducting co-curricular activities

Students are involved in following committees for conducting co-curricular activities.



# Vivekanand Education Society's Institute of Technology

(Affiliated to University of Mumbai, Approved by AICTE & Recognized by Govt. of Maharashtra)

1. **Class Representatives / Class Council**
2. **Departmental Advisory Board** (to bridge the gap between industry and academics)
3. **VESIT-IIC** (Institution's Innovation Council)
4. **Placement Committee** (Placement coordinators are responsible for smooth conduction of placement drive)
5. **Professional Societies:** There are four Professional Societies (**IEEE,ISA,CSI,ISTE**) managed by students under Faculty In-Charge's supervision.

### 3. **Representation on the administrative committees**

Students are involved in following administrative committees:

1. College Development Committee
2. Internal Complaint Committee
3. Committee for SC/ST
4. Anti-sexual harassment Committee
5. Hostel and Canteen Committee
6. Anti Tobacco Committee
7. Student Welfare Committee
8. Internal Quality Assurance Committee
9. Equal Opportunity Center Committee